

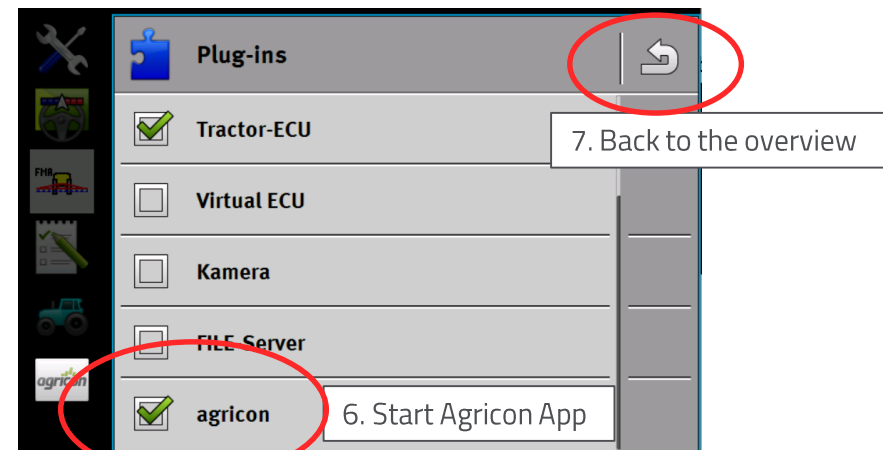
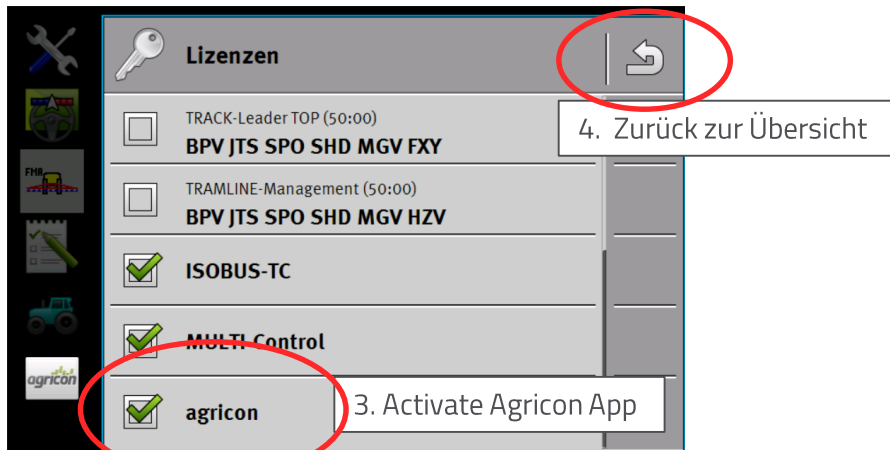
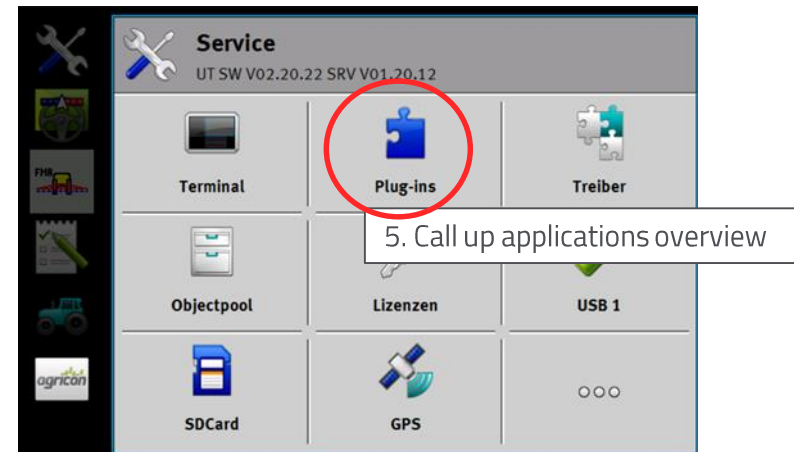
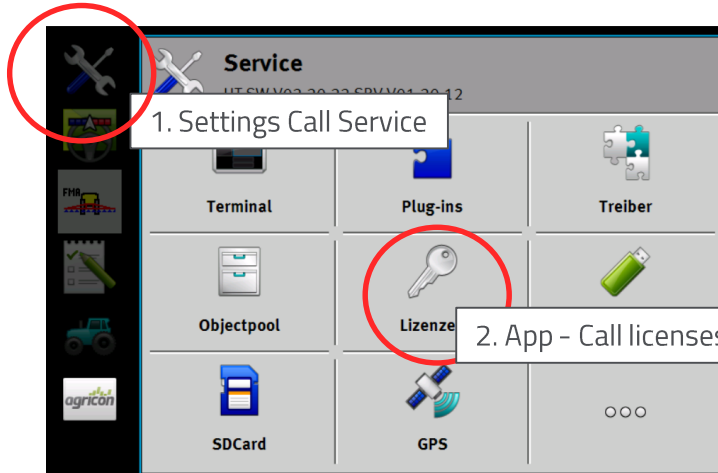
Terminals - ISOBUS



---

Working with N-Sensor and Agricon Touch 1200/800

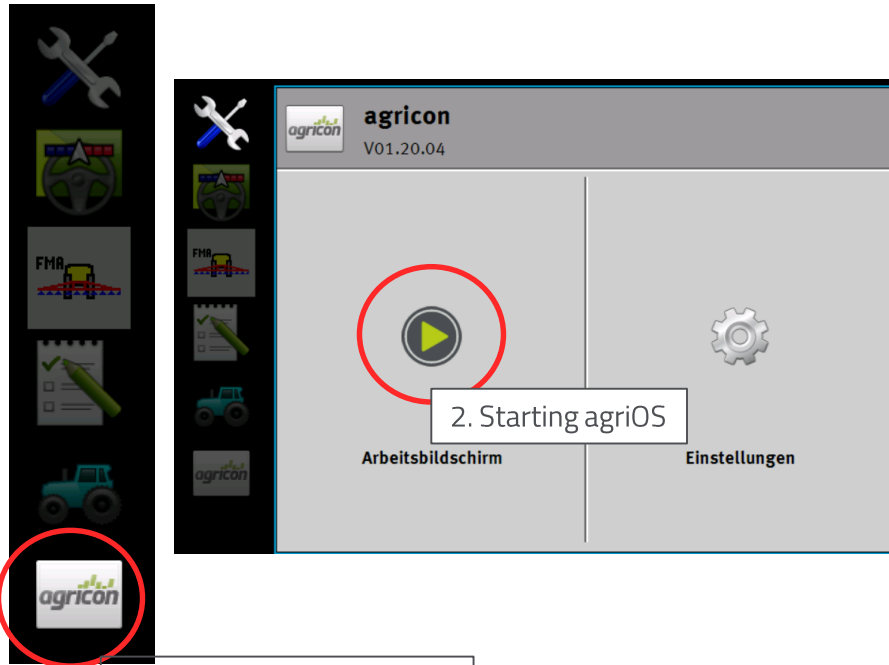
## Voreinstellungen am Terminal



# Terminals - ISOBUS



## Working with N-Sensor ,settings agriOS

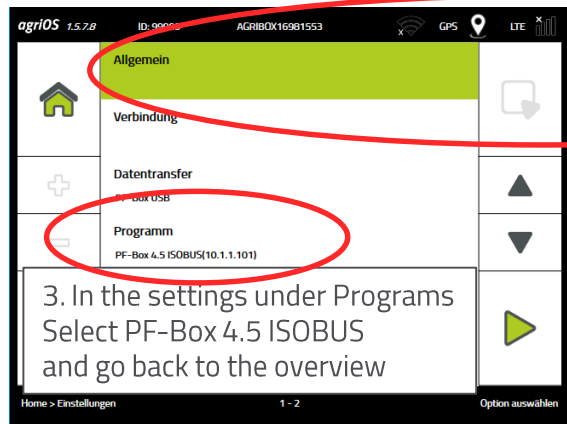
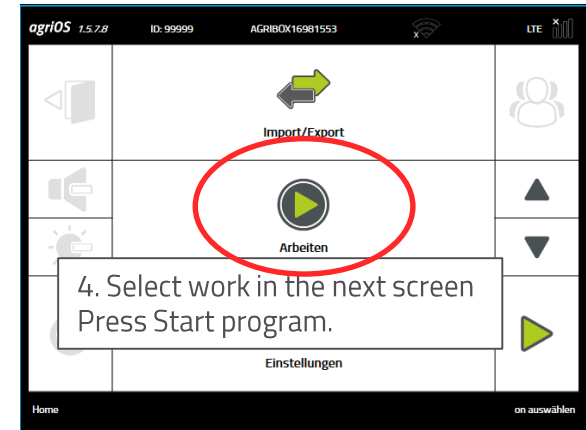
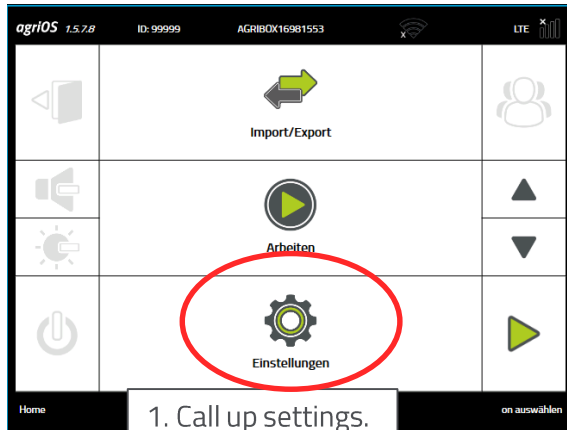


1. Opening the Agricon App

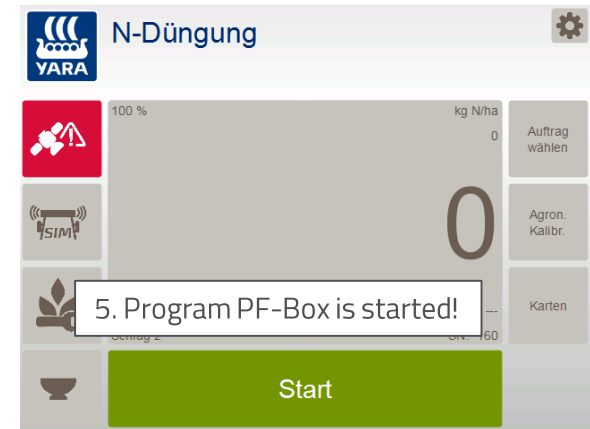


3. agriOS in operating mode

# Terminals - ISOBUS



2. Under General you can set the language to English



# Terminals - ISOBUS



**N-Düngung**

1. Call up settings

Under settings -> general settings language you can switch to English, restart an go to settings

Start

**Einstellungen**

2. Switch to select modules.

Auswählen

**Module auswählen**

3. Under implement Select FONSIP-2 implement and go back

Auswählen

**Hinweis:**  
If another implement selected the PF box is still stored in the Terminal, but a connection to the application device is not established!

# Terminals - ISOBUS



YARA N-Düngung

1. Call up settings

100 % kg N/ha 0 Auftrag wählen

ISIM 0 Agron. Kalibr.

Auftrag 2 Karten

Schlag 2 SN: 160

Start

agricon 1.5.7.8 ID: 99999 AGRIBOX16981553

Programm starten  
PF-Box 4.5 ISOBUS(10.1.1.101)

Auftragsliste  
N2WW\_frueh\_PFBox

Profile

6 Feld(er) von 0,00 ha.

Home > Arbeiten > Details Start an action

Einstellungen 1 / 1

Module auswählen

Module konfigurieren

Neu Allgem. Einstellungen Systeminformationen

Löschen Debuggen Anwendung beenden

Alle löschen Auswählen

2 Exit application.

ISOBUS-TC TM V02.20.17 TC V01.20.14

Kunden Betriebe Abmelden Akt. Auftrag

Geräte Produktgruppen Einstellungen Aufträge

Felder Arbeiter

4. Call settings

Einstellungen

farnpilot deaktivieren

Arbeitsmodus Erweitert

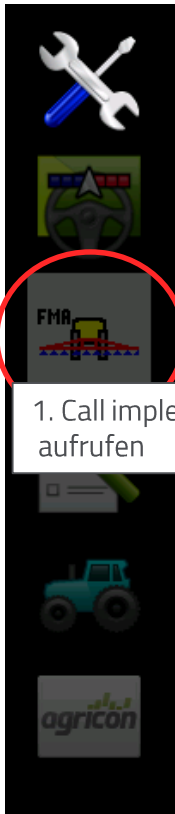
TC-Nummer

Beendete Aufträge als Datei speichern?

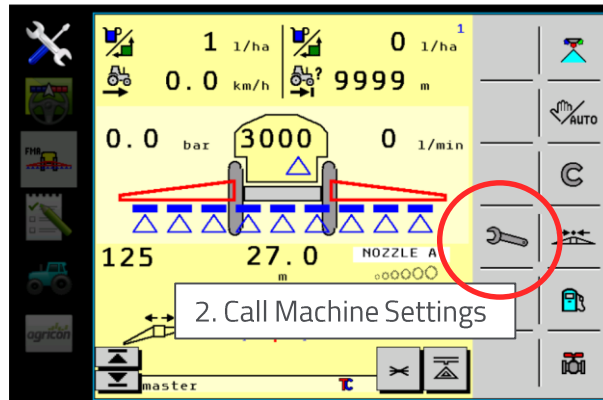
5. Work mode must be set to Stand extended, otherwise change!



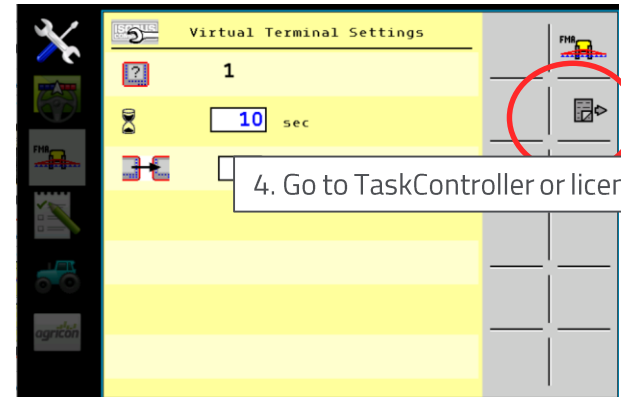
## Setting TaskController, control implement settings



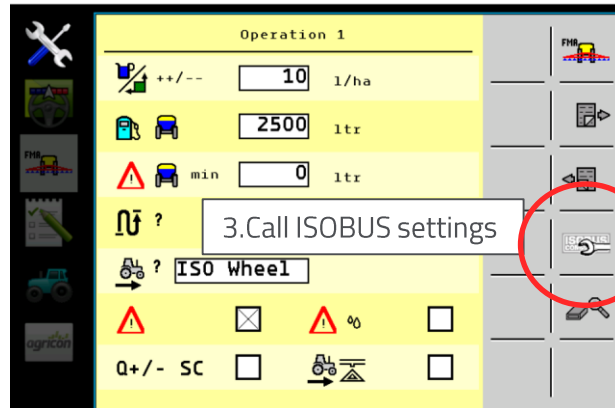
1. Call implement aufrufen



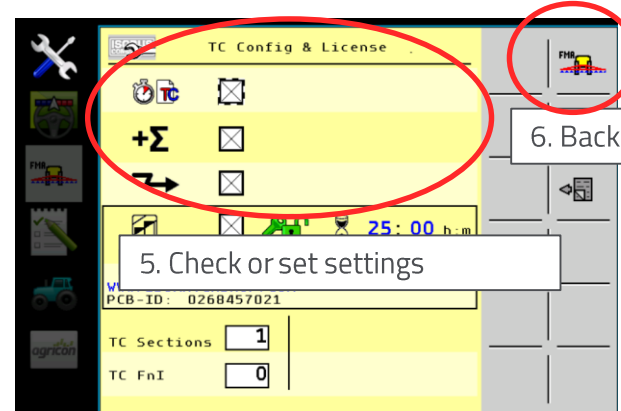
2. Call Machine Settings



4. Go to TaskController or licence



3. Call ISOBUS settings



5. Check or set settings

6. Back to implem



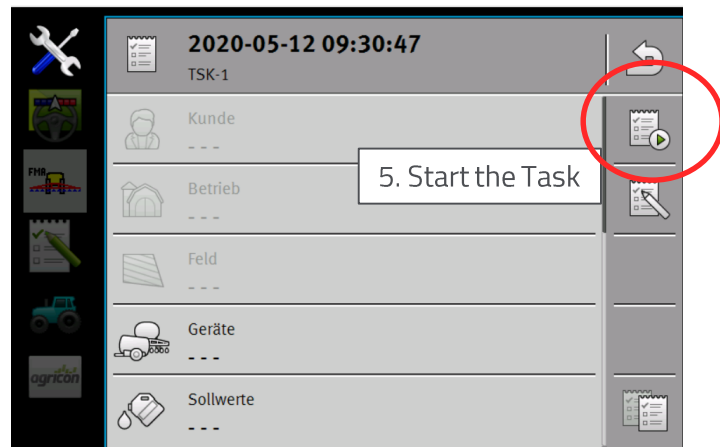
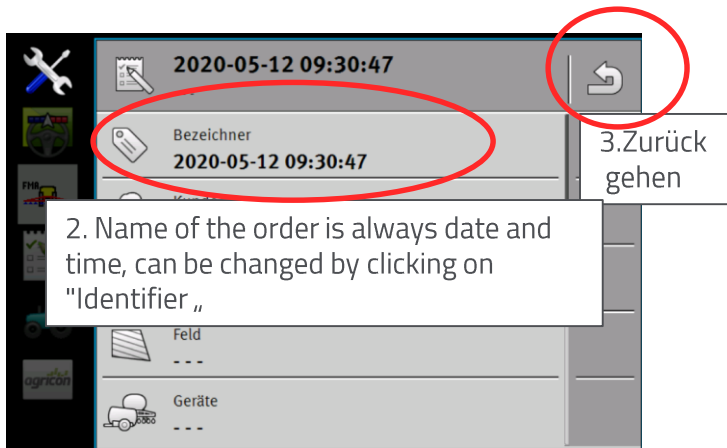
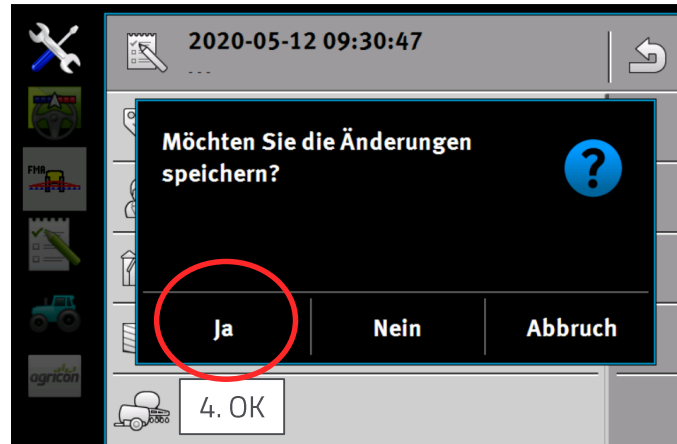
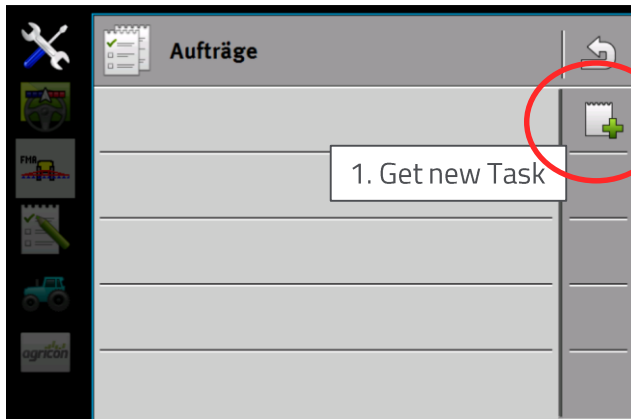
## Start a Task

The screenshot shows the ISOBUS-TC main menu. At the top, it displays "ISOBUS-TC" and "TM V02.20.17 TC V01.20.14". The menu is organized into a grid of buttons with icons and labels. A red circle highlights the top-left icon (a notepad with a green pencil) and a callout box points to it with the text "1. Call TaskController". Another red circle highlights the top-right icon (a notepad with a green pencil and a green circle) and a callout box points to it with the text "2. Call Task List".

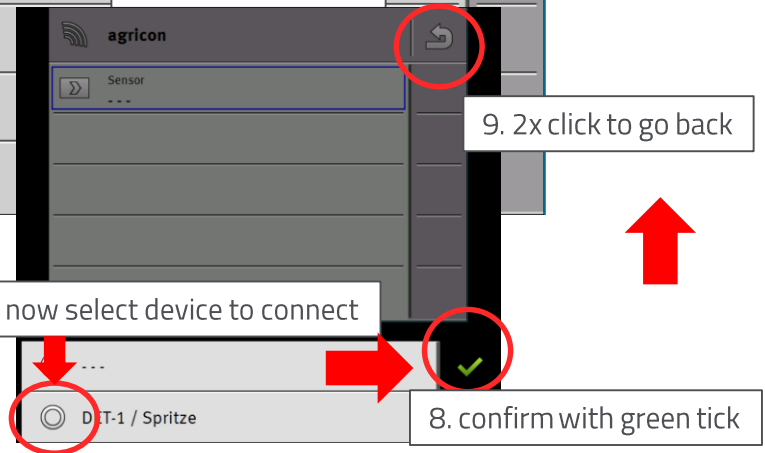
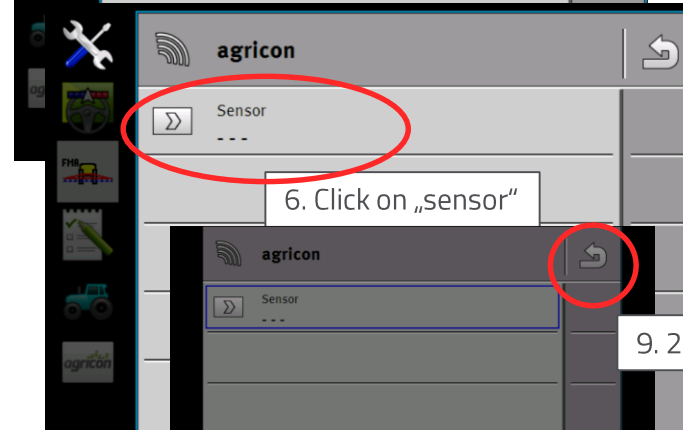
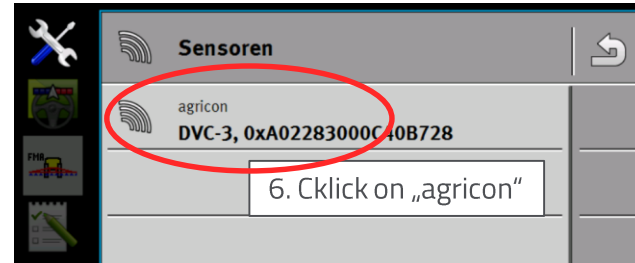
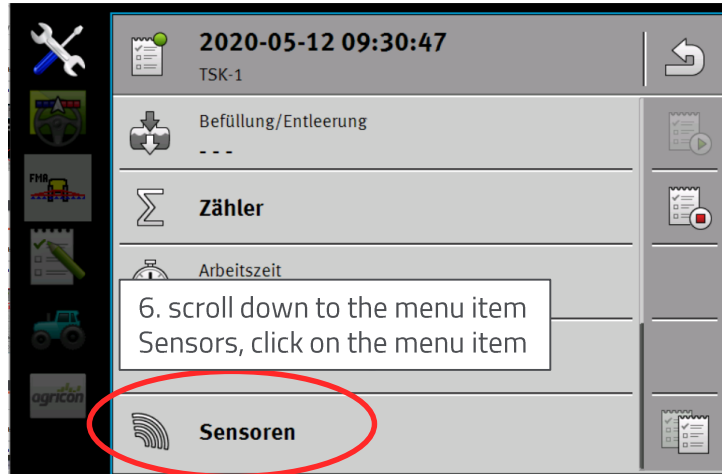
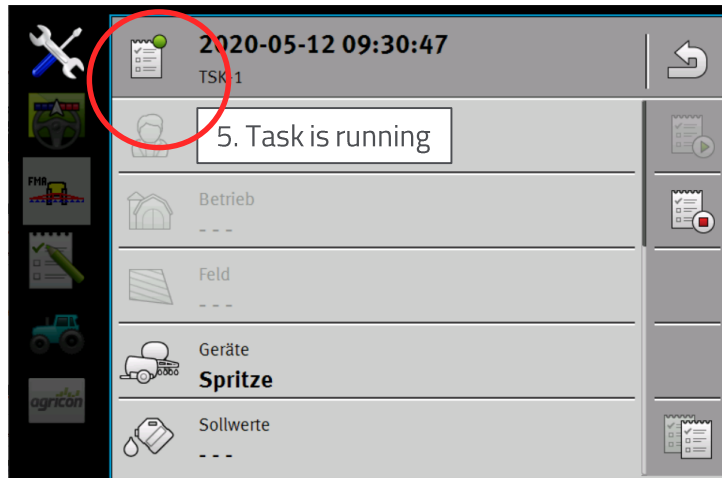
	<b>ISOBUS-TC</b> TM V02.20.17 TC V01.20.14		
Kunden	Betriebe	Abmelden	Akt. Auftrag
Geräte	Produktgruppen	Einstellungen	2. Call Task List
Felder	Arbeiter		

Note: without Task no working with the sensor possible !

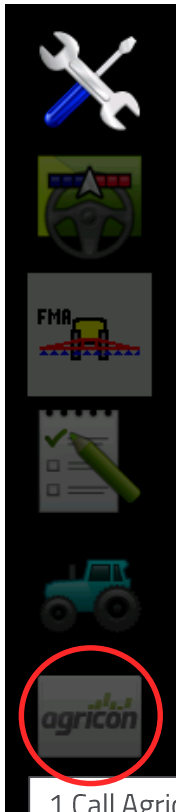
# Terminals - ISOBUS



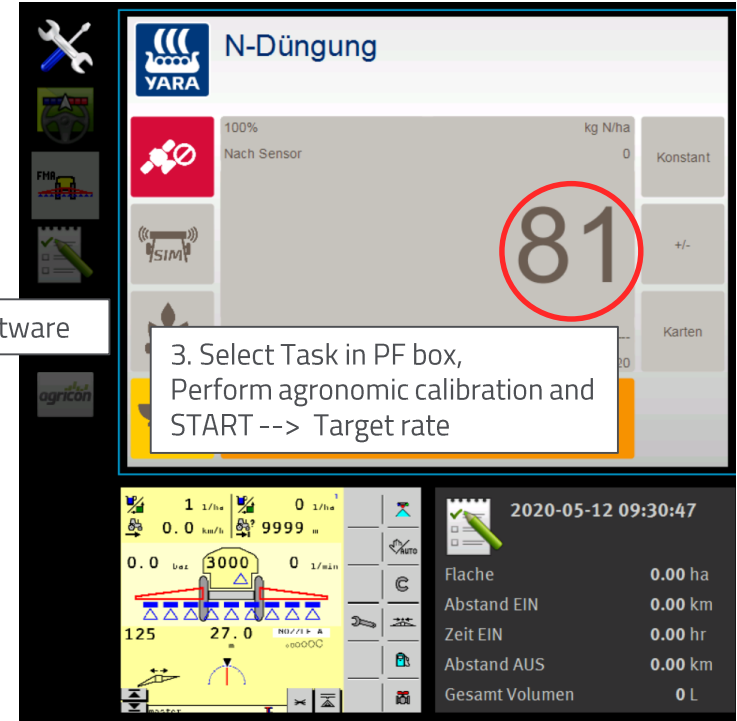
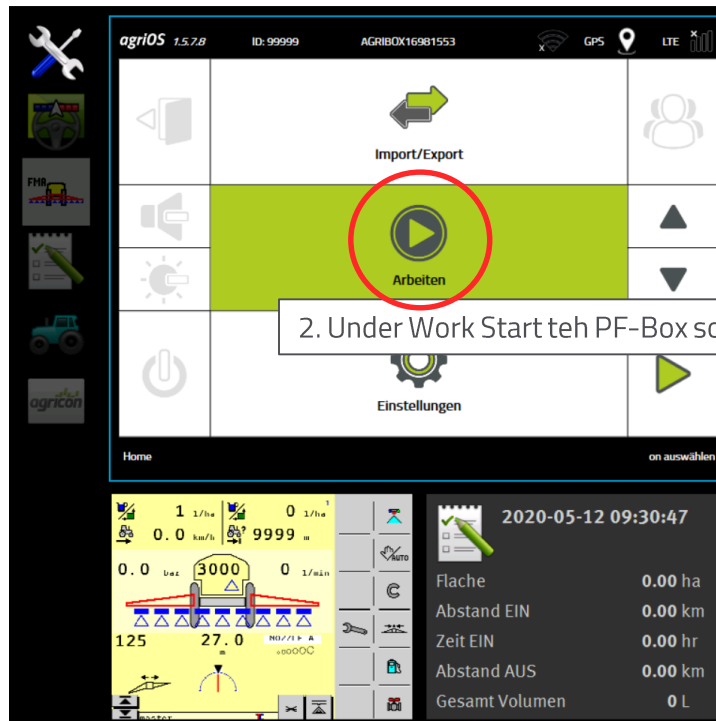
# Terminals - ISOBUS



# Terminals - ISOBUS



1. Call Agricon App



# Terminals - ISOBUS



The screenshot displays the Agricon ISOBUS terminal interface. The main display area is yellow and shows various data points: 60 l/ha (circled in red), 0.0 km/h, 0 l/ha, 9999 m, 0.0 bar, 3000, 0 l/min, 125, 27.0 (circled in red), and NOZZLE A. A red arrow points from the 60 l/ha value to the 27.0 value. A white box with a red border contains the text "Data is transferred, if necessary with a time delay". The bottom left shows a "YARA N-Düngung" section with a "81" (circled in red) and a "Stopp" button. The bottom right shows a date and time "2020-05-12 09:30:47" and a list of statistics: Fläche (0.00 ha), Abstand EIN (0.00 km), Zeit EIN (0.00 hr), Abstand AUS (0.00 km), and Gesamt Volumen (0 L). A sidebar on the left contains various icons, including a wrench, a tractor, and a fuel tank. A callout box on the left says "1. Call implement" with a red circle around the FMR icon.

1. Call implement

Data is transferred, if necessary with a time delay

Fläche	0.00 ha
Abstand EIN	0.00 km
Zeit EIN	0.00 hr
Abstand AUS	0.00 km
Gesamt Volumen	0 L